

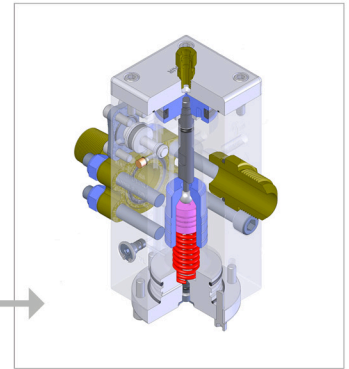
FORKLIFT SYSTEM

USING FSV & SAFETY VALVE

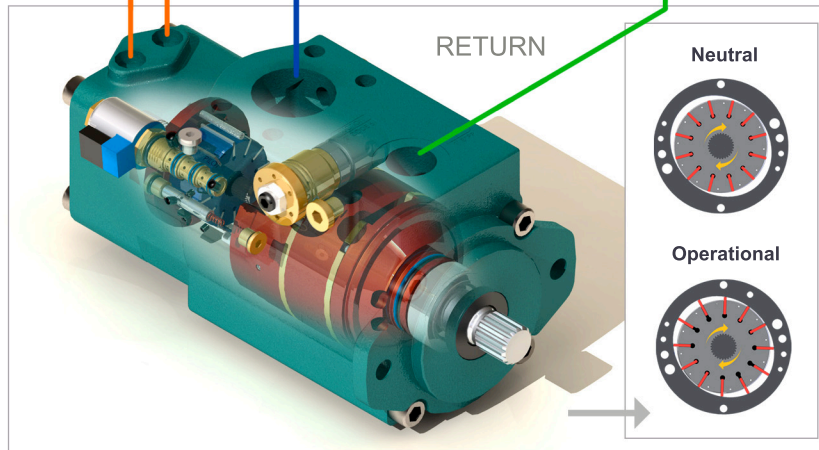
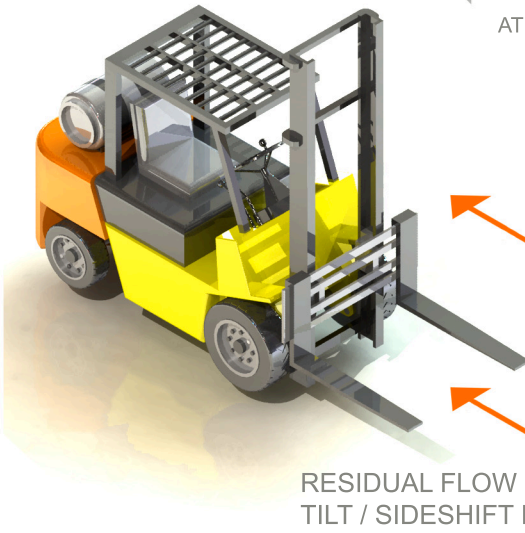
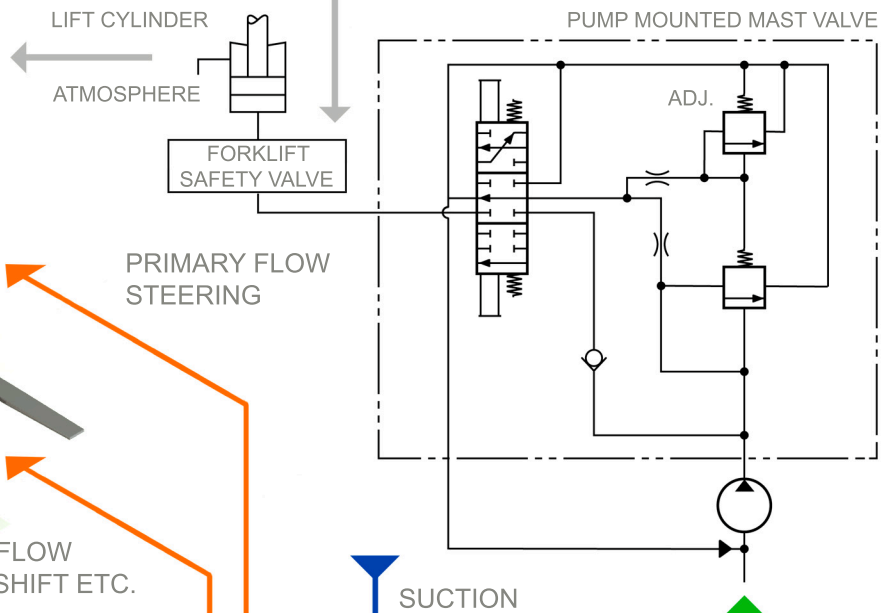
Flow Diagram

Forklift mast cylinders require a high flow to meet performance specifications while raising. At all other times this flow is wasting fuel and causing unnecessary noise.

The proposed Pump Mounted Mast Valve system reduces valve complexity and size. The pump can be either hydraulically or electrically signalled on or off. A single line to the mast cylinder is the only connection.



FORKLIFT SAFETY VALVE
 DUAL STAGE
 EMPTY BODY FLOW - HIGH
 LOADED BODY FLOW - CONTROLLED



FUEL SAVING VANE PUMP (FSV) - Driven Off Engine PTO Permanent Mesh

MH-FSV/PTO/ABS

Patent No's. 200 4256150 AUST, 11/331 156 USA, 200 6246313 AUST, PCT/AU2007/000772-PCT
 Mathers Hydraulics reserve the right to change specifications at any time without notice.



Mathers Hydraulics Pty Ltd
 16 Armada Place, Banyo, QLD 4014, Australia
 Phone: +61 7 3267 0065 Fax: +61 7 3267 0056
 Web: www.mathershdraulics.com.au
 Email: sales@mathershdraulics.com.au

MATHERS
 HYDRAULICS