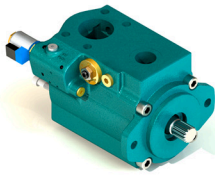


FUEL SAVING VANE PUMP

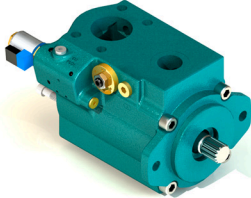
FSV 20
&
TRUCK
STEERING



Typical
SAVINGS

Up to
0.8 l/hr

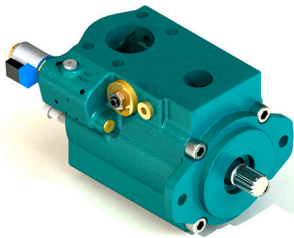
FSV 25



Typical
SAVINGS

Up to
1.0 l/hr

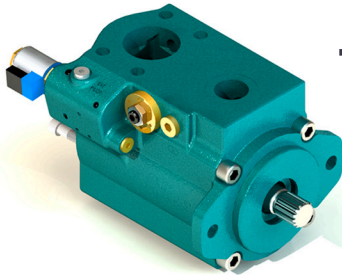
FSV 35



Typical
SAVINGS

Up to
2.0 l/hr

FSV 45



Typical
SAVINGS

Up to
3.0 l/hr

lower carbon emissions
- ideal for carbon trading

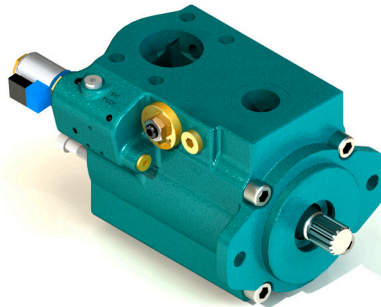
carbon reduction benefits

**FSV is a Greenhouse
Friendly Pump**

today's company mission statements
include carbon saving statements - we
require fuel saving green house gas
friendly hydraulic pumps

save cash

use FSV pump



MH-FSV-Pumps-AMS

Mathers Hydraulics reserve the right to change specifications at any time without notice.

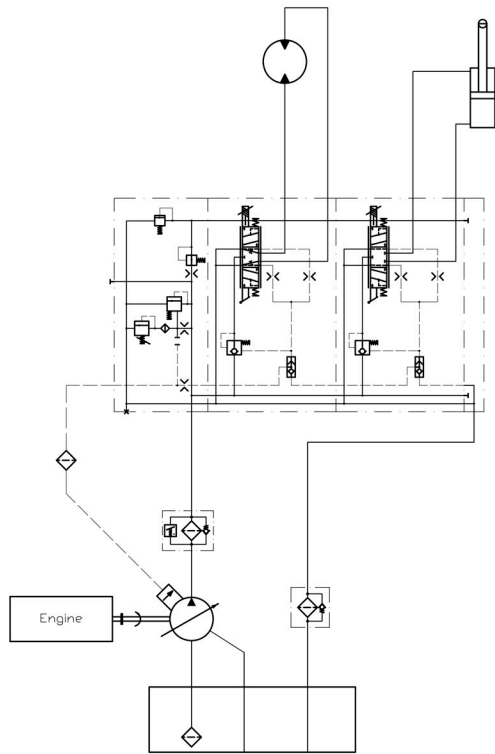


Mathers Hydraulics Pty Ltd
16 Armada Place, Banyo, QLD 4014, Australia
Phone: +61 7 3267 0065 Fax: +61 7 3267 0056
Web: www.mathershdraulics.com.au
Email: sales@mathershdraulics.com.au

MATHERS
HYDRAULICS

FUEL SAVING VANE PUMP

Typical Piston Pump Circuit



Regardless of machine function needs - this is a typical control circuit that has to be serviced & maintained.

The valves are complex and sensitive to debris from seals, ruptured hoses and normal system contamination.

The pumps are sensitive to speed, cold starts, hot oil & hose rupture contamination. And can require constant case flushing and due to intermittent operation the oil can quickly become contaminated in the reservoir.

Typical FSV Circuit

Suitable for majority of machinery needs

Ensure your machine is not unnecessarily complex, the FSV is easier to maintain & cheaper to service.

Make the right choice, use either:

1. FSV or Piston Pump with load sensing control valves.
2. FSV with mobile standard control valves.

FSV Advantages

- FSV Pumps are field serviceable, with replacement cartridges.
- The system can be heated and flushed on demand.
- Less sensitive to cold starts.
- Less sensitive to high speed operation & hose rupture.

